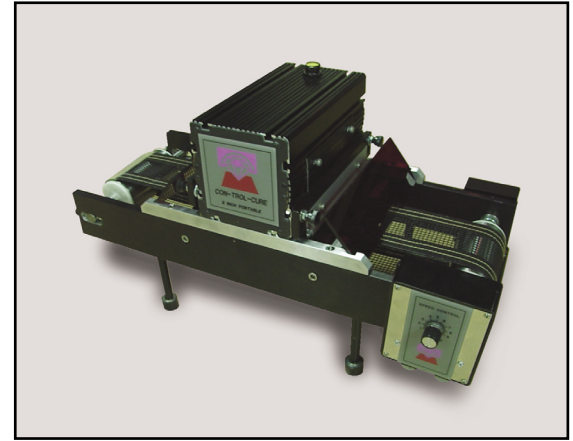




UV Developer's Kit



Optional Conveyor System

## Performance – Value

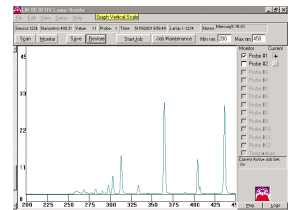
The first portable UV system that provides all of the popular wavelengths and at a truly economical price

The CON-TROL-CURE™ UV Developer's Kit offers the first benchtop UV system that allows its user to switch UV wavelengths from job to job. The kit's 4" wide effective curing area and its use of a 110/60/1 or 220/50/1 power source makes this system ideal for all laboratory and small production applications. Since many of today's UV formulations demand specific UV wavelengths for complete and efficient curing, it is essential that a laboratory UV curing system have the ability to deliver maximum UV energy in all popular wavelengths: mercury, iron, gallium and metal halide. Until now, there has not been an economical UV curing unit available offering the ability to cure using different UV wavelengths.

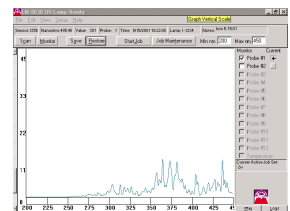
The UV Developer's Kit includes a universal power supply, a precise focus lamp housing with quick change lamp holders and four UV lamps (mercury, iron, gallium and metal halide). The universal power supply is designed to drive all of the lamps and to vary the output of each of the lamps from 150 W/in. to 300 W/in. The kit's 110 or 220 Volts, 50/60 Hz power requirement adds to its simplicity and makes it ideal for field testing and demonstrations.

### Benefits of CON-TROL-CURE® UV Developer's Kit program:

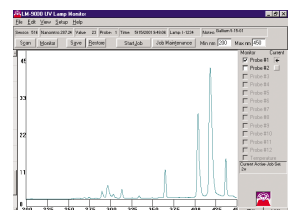
- Unit has adjustable energy output for precise and repeatable results
- Lightweight system is portable for practical use in the lab or in the field
- Quick change lampholders simplify lamp installation to deliver desired peak wavelength from project to project



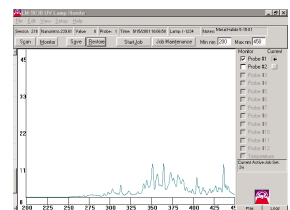
Mercury



Iron



Gallium



Metal Halide

For more information, go to [www.uvprocess.com](http://www.uvprocess.com)

# UV DEVELOPER'S KIT



## Optional Equipment:

### Optional Conveyor

To enhance performance and the repeatability of testing, the UV Developer's Kit can be supplied with a benchtop conveyor system. The sturdy but light-weight conveyor has a 4" wide belt that is speed adjustable from 5-60 FPM.

### Optional Shuttered Lamp Housing

The standard, non-shuttered lamp housing can be replaced with a shuttered lamp housing for applications where the substrate may stop in front of the lamp.

## Developer's Kit Specifications:

Lamps kit contains one each:	Mercury, Iron, Gallium, Metal Halide
UV output:	150 to 300 W/in. (adjustable)
Curing width:	4"
Power requirement:	110 or 220, 50/60 Hz, single phase
Lamp housing dimensions	10.5"L x 5.5"W x 5.5"H
Power supply dimensions	14" x 10" x 6.5"
Total weight of complete unit:	15 lbs.

## Optional Conveyor Specifications:

Belt speed:	5-60 fpm (adjustable)
Belt Type:	UV specific-Teflon-coated over fiberglass

<u>Item No</u>	<u>Description</u>	<u>Price</u>
A012-034	UV Developer's Kit: complete with power supply, un-shuttered lamp housing and four 300 W/in. lamps (mercury, iron, gallium and metal halide).	\$ 3,000.00
A012-039	Replacement Lamp: mercury	\$ 275.00/EA.
A012-036	Replacement Lamp: iron	\$ 295.00/EA.
A012-037	Replacement Lamp: gallium	
A012-038	Replacement Lamp: metal halide	
A012-040	Shuttered Lamp Housing: to replace standard un-shuttered lamp housing, add...	\$ 900.00
A012-041	Conveyor: designed for use with UV Developer's Kit	\$ 2,700.00

For more information, go to  
[www.uvprocess.com](http://www.uvprocess.com)

Note: Prices and product specifications are subject to change without notification