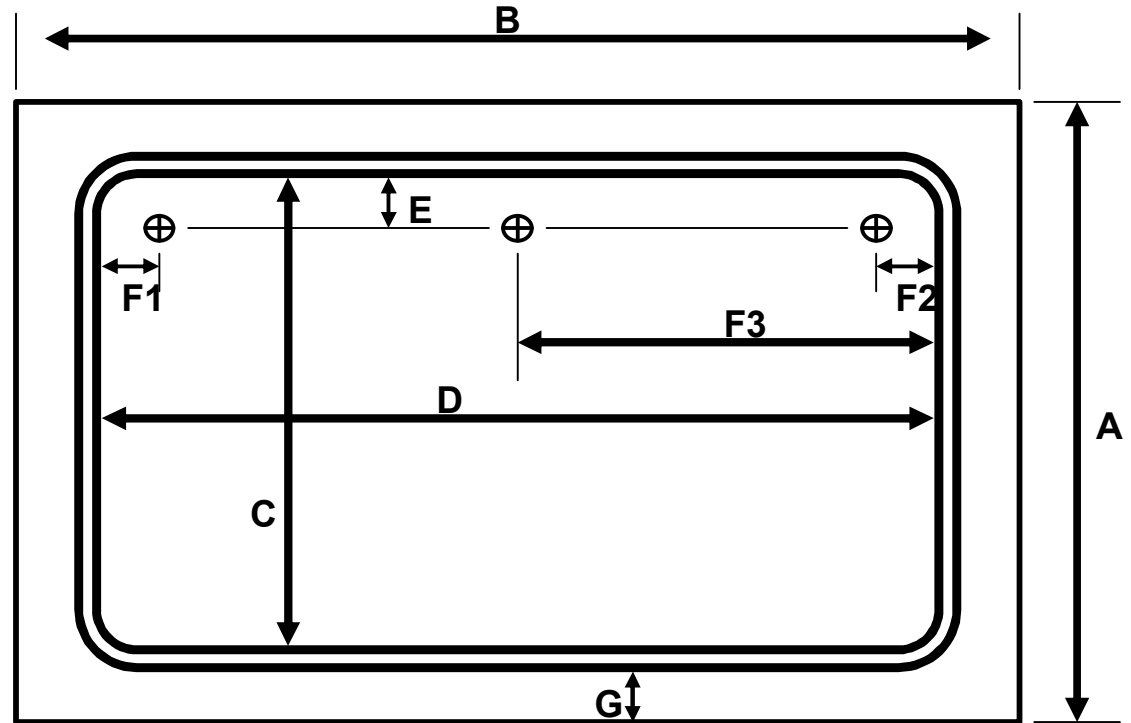


# Custom Vacuum Blanket Quotation Request



- \_\_\_\_\_ " = A, Width outside
- \_\_\_\_\_ " = B, Length outside
- \_\_\_\_\_ " = C, Bead to Bead inside
- \_\_\_\_\_ " = D, Bead to Bead inside

NOTE: BE SURE TO ALLOW FOR THE BEAD WIDTH OF 3/4" IN YOUR MEASUREMENTS.

- \_\_\_\_\_ " = E, Bead to valve center
- Bead to valve center F1, F2, or F3

Select one for valve position

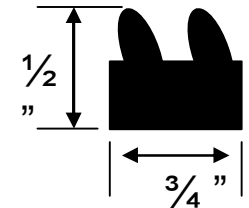
- \_\_\_\_\_ " = F1 Left located
- \_\_\_\_\_ " = F2 Right located
- \_\_\_\_\_ " = F3 Centered

- \_\_\_\_\_ " = G, Edge Distance

## Select Blanket Type Below

- \_\_\_\_\_ Type 1HD/72 = Same material as above but increased thickness provides longer wear and less possibility of tearing. Smooth Finish. 1/16" thick
- \_\_\_\_\_ Type 1HD/72FF = Same as Type 1HD/72 except fabric finish added on one side to allow for faster air evacuation. 1/16" thick
- \_\_\_\_\_ Type 2 = Black sponge rubber on one side and blue nylon one side. Rugged nylon reduces tearing from the sharpest frame corners. 1/4" thick
- \_\_\_\_\_ Type 3 = Black synthetic rubber. Very economical for large blankets but does not have the high tensile, tear and elongation of the type 1 blankets. Not recommended for blankets that are smaller than 72" in one dimension. 0.045" thick

## BEADING Cross Section



UV Process Supply  
 1229 W. Cortland St.  
 Chicago, IL 60614  
 (773) 248-0099 / Fax (773) 880-6647  
[info@uvps.com](mailto:info@uvps.com) / [www.uvprocess.com](http://www.uvprocess.com)